

SI 8500

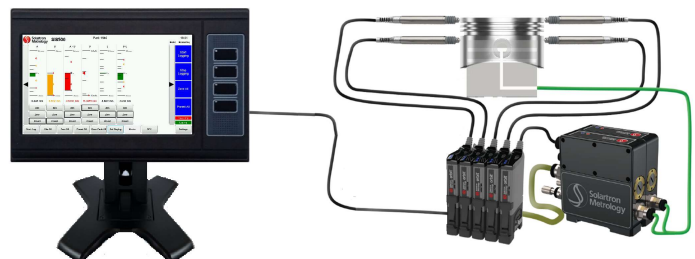


The SI 8500 provides the opportunity to collect measurement data with the purpose of optimizing manufacturing production analysis and control. User interface has been designed to ensure all users the maximum accessible data for industrial measurement applications.



KEY FEATURES

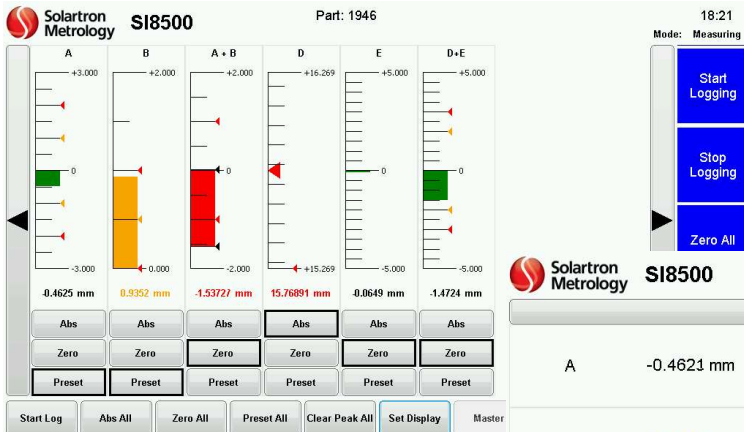
- Heavy duty aluminium casing with 10" Touch screen. Built for an industrial environment.
- IP 64 for front panel with four programmable keys
- Connect with up to 64 Orbit Sensors
- Powers up to 10 Modules, including contact and non-contact sensors
- Easy & intuitive setup with touch screen
- Build your own custom formulas
- SPC and Mastering functions included
- I/O connections for automation
- USB Port for easy data output
- Footswitch plug
- Link to 3rd party sensors via Orbit connection modules, including air gauging
- Benchtop (with stand) or Panel Mount option (VESA Mounting Standard)



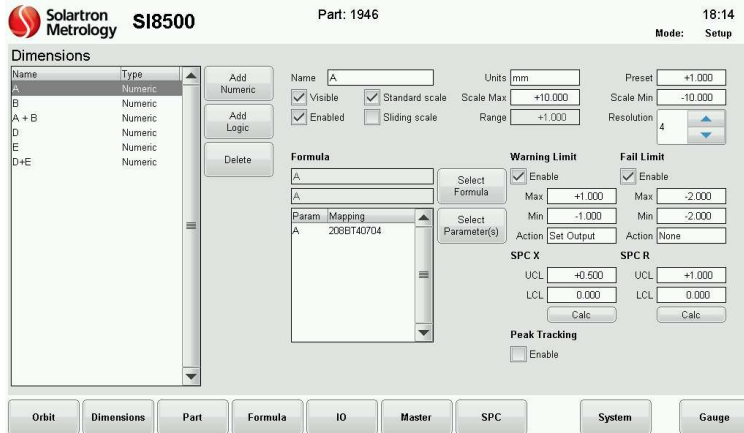
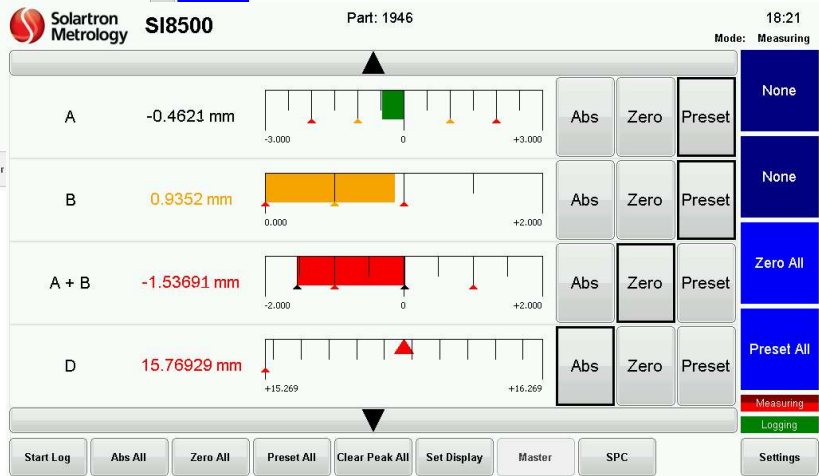
Precision. Quality. Reliability

www.solartronmetrology.com • sales.solartronmetrology@ametek.com

Demo screens

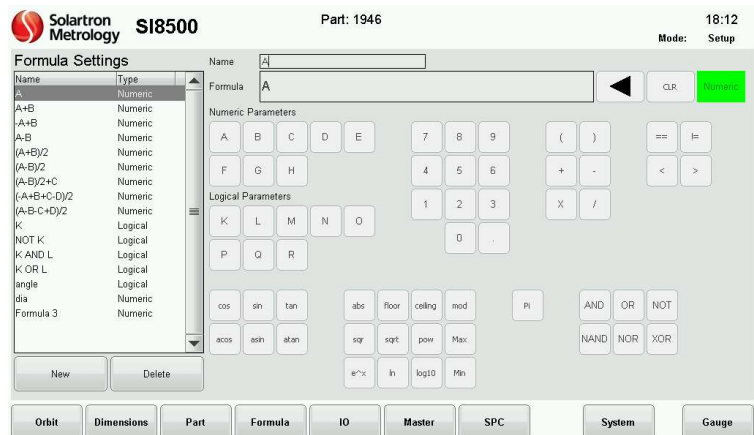


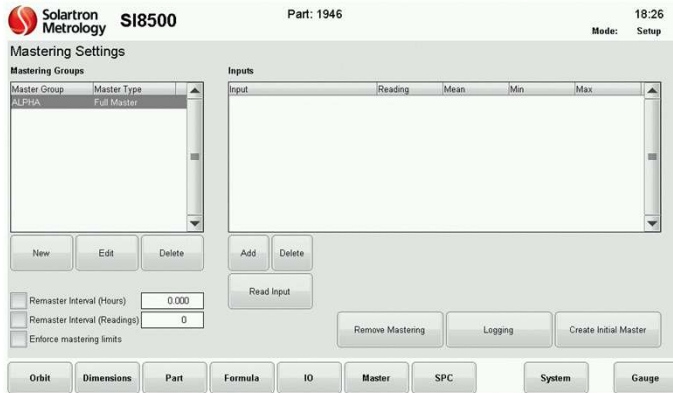
Multiple display options



Set up display and tolerance for each dimensional channel

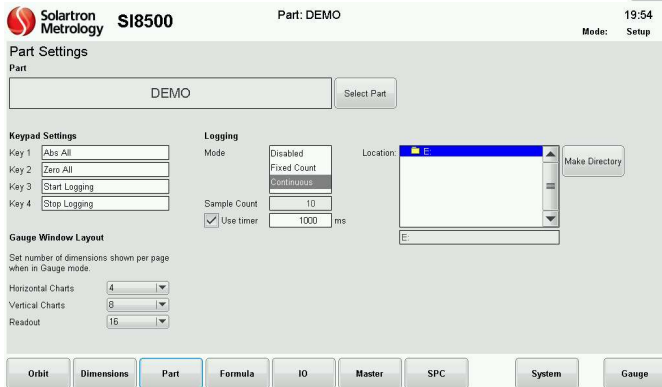
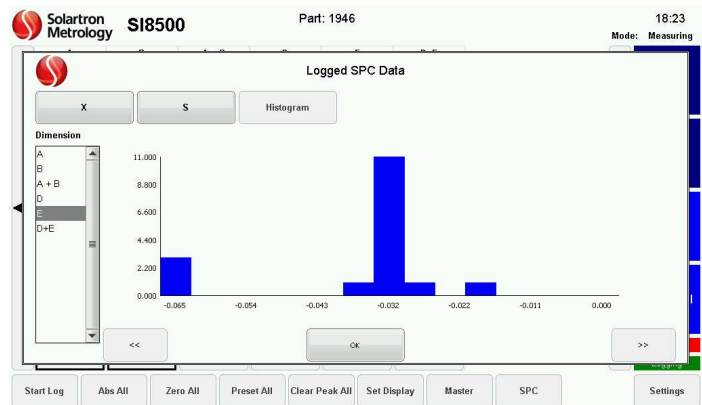
Build custom formulas and store them





Mastering settings are included

Statistical Process Control functions are included.



Save multiple parts and set up data output

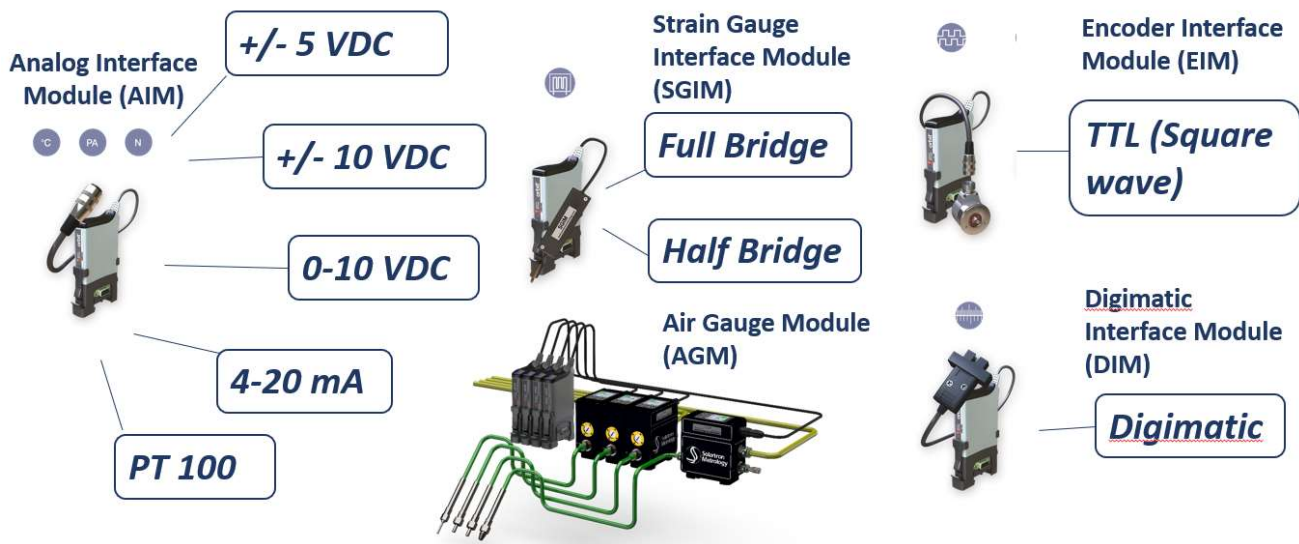
Readout can output to USB stick in .CSV format for import into Excel or other program

	A	B	C	D	E	F	G	H	I	J	K	L
1	Filename	E:\1946_13042023_182254.csv										
2	Log Start:	13/04/2023 18:22:54										
3	Logging M:	Continuous										
4												
5	Dimension	Warning N	Warning N	Fail Max	Fail Min							
6	A	1	-1	2	-2							
7	B	0.5	0	1	0							
8	A + B	Disabled	Disabled	1	-1							
9	D	Disabled	Disabled	7	3							
10	E	Disabled	Disabled	Disabled	Disabled							
11	D+E	2	-2	3	-3							
12												
13	Count	Time (ms)	Timestamp	Trigger	A (mm)	B (mm)	A + B (mm)	Peak -	Peak +	D (mm)	E (mm)	D+E (mm)
14	1	300	13/04/2023	TIMER	-0.4645	0.9352	-1.53928	-1.53969	-1.53889	15.76691	-0.0649	-1.4744
15	2	1300	13/04/2023	TIMER	-0.4648	0.9351	-1.53967	-1.53969	-1.53889	15.76653	-0.0649	-1.4748
16	3	2339	13/04/2023	TIMER	-0.4648	0.9352	-1.53966	-1.53969	-1.53889	15.76653	-0.0649	-1.4748
17	4	3339	13/04/2023	TIMER	-0.4648	0.9622	-1.51265	-1.53969	-1.51265	15.76653	-0.0379	-1.4748
18	5	4339	13/04/2023	TIMER	-0.4645	0.9829	-1.49153	-1.53969	-1.47118	15.76691	-0.0172	-1.4744
19	6	5380	13/04/2023	TIMER	-0.4648	0.9702	-1.50464	-1.53969	-1.47118	15.76653	-0.0299	-1.4748
20	7	6422	13/04/2023	TIMER	-0.4935	0.9669	-1.53666	-1.53969	-1.47118	15.73782	-0.0332	-1.5035
21	8	7422	13/04/2023	TIMER	-0.5235	0.9669	-1.56659	-1.58187	-1.47118	15.70787	-0.0332	-1.5334
22	9	8422	13/04/2023	TIMER	-0.524	0.9669	-1.56707	-1.58187	-1.47118	15.7074	-0.0332	-1.5339
23	10	9422	13/04/2023	TIMER	-0.5239	0.9668	-1.567	-1.58187	-1.47118	15.70749	-0.0332	-1.5338
24	11	10460	13/04/2023	TIMER	-0.5243	0.9668	-1.56738	-1.58187	-1.47118	15.70711	-0.0332	-1.5342
25	12	11504	13/04/2023	TIMER	-1.9763	0.9668	-3.01944	-3.01944	-1.47118	14.25505	-0.0332	-2.9862

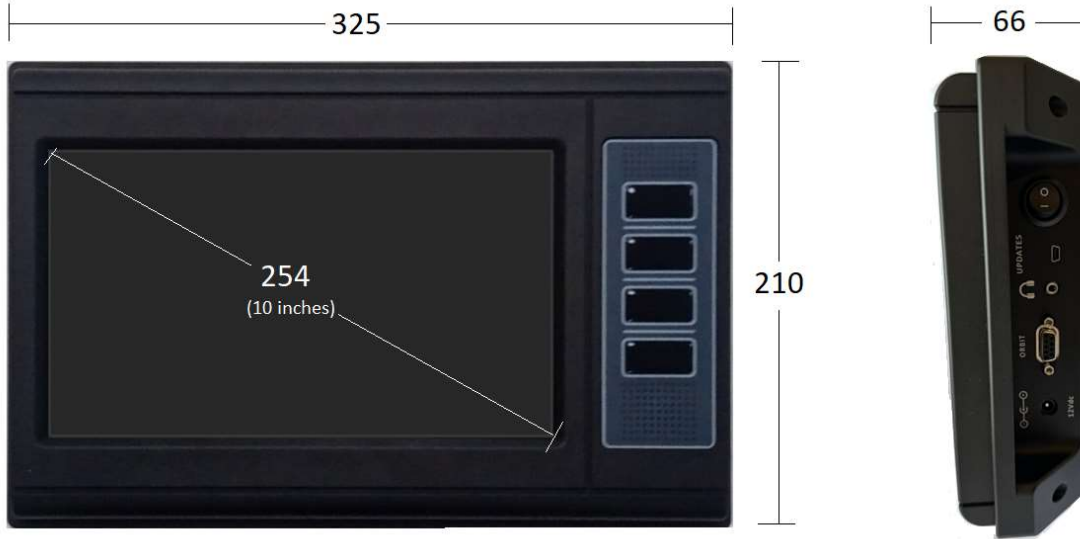
Specifications

SI 8500	
Performance	
Maximum number of Orbit Modules	64
Maximum Number of Orbit Modules powered	10
Network speed	Up to 1000 readings, per module, per second
Math Equations	Standard formulas pre-loaded. Customized formulas available.
Output format	.csv
Hardware	
Casing	Aluminum
Touch Screen	254 mm (10-inch) touch screen, glass
Max Readings on screen	4,8, or 16 vertical, horizontal bars
External connections	I/O (NPN, PNP, TTL), Footswitch
Power	100-240VAC
Storage Temperature (°C)	-20 to +80
Operating Temperature (°C)	5 to +60
Sealing	IP 64 (front panel), IP 50 (Rear)
Mounting	VESA 75 x 75 or 100 x 100 mm
Mounting Hole Threads	M4 X 12

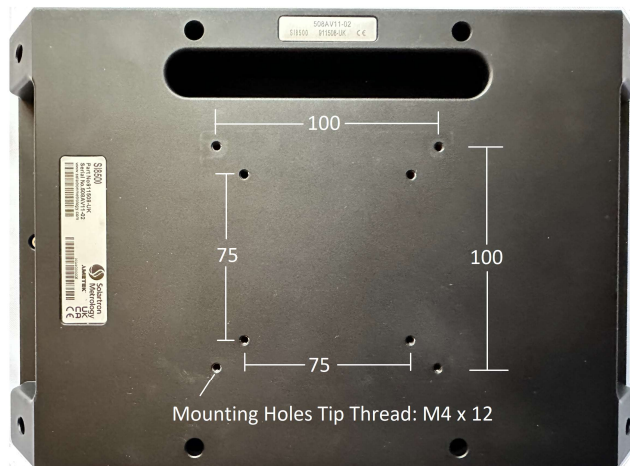
Connect to 3rd party sensors



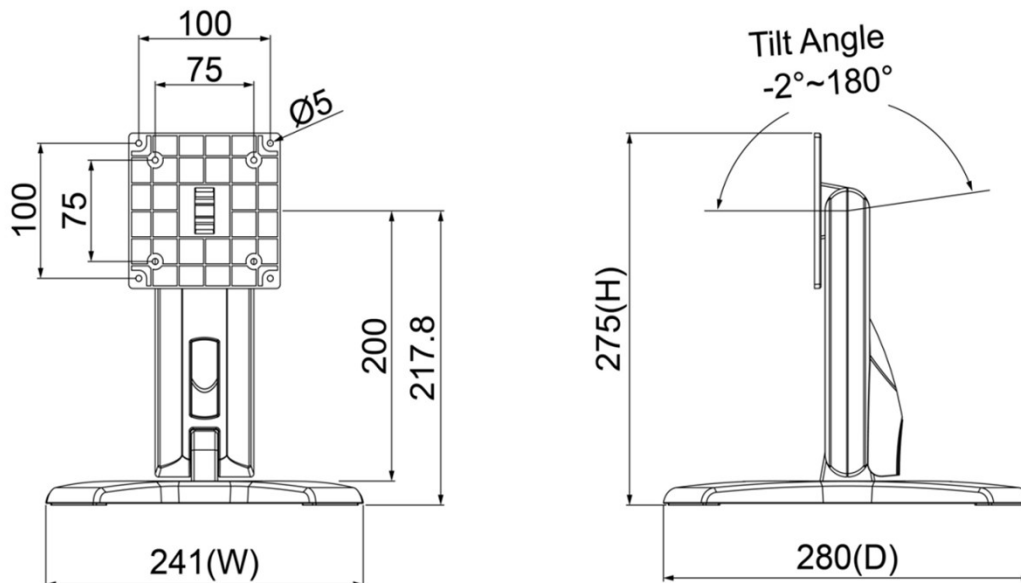
Dimensions (mm)



Back of Unit
(VESA Mounting Standard)



Stand (with benchtop version)





Worldwide Sales Offices



UK Head Office and Factory

Solartron Metrology
Steyning Way
Bognor Regis
West Sussex
UK, PO22 9ST
Tel: +44 (0) 1243 833333
Email: sales.solartronmetrology@ametek.com

France

Ametek SAS
Solartron Metrology Division
Rond point de l'epine des champs
Buroplus Bat D
Elancourt
78990
France
Tel: +33 (0) 1 30 68 89 50
Email: info.solartronmetrology@ametek.fr

Germany

Ametek GmbH
Solartron Metrology Division
Rudolf-Diesel-Strasse 16
40670 Meerbusch
Tel: +49 (0) 2159 9136 500
Email: vertrieb.solartron@ametek.com

China

Ametek Commercial Enterprise (Shanghai) Co., Ltd
Part A1, A4 2nd Floor
Building No 1, No 526 Fute
3rd Road East
Shanghai
Pilot Free Trade Zone
200131
China
Tel: +86 21 5763 2509
Email: china.solartronmetrology@ametek.com

USA

Solartron Metrology
915 N. New Hope Road, Suite C
Gastonia, NC 28054
Tel: +1 800 873 5838
Email: usasales.solartronmetrology@ametek.com

Japan

Ametek-Japan
Solartron Metrology Division
Tokyo Office
Shiba NBF Tower (1F, 3F)
1-1-30, Shiba Diamon Minato-Ku, Tokyo, Japan
(P.C.105-0012)
Tel: +81 03-4520-6654
Email: Mamoru.hasegawa@ametek.com

Thailand

Ametek (Thailand)
Solartron Metrology Division
B4.1.1 – B4.1.3 Floor 1st, SUMMER Lasalle
846 La Salle Rd., Bangna Tai, Bang Na
Bangkok, 10260, Thailand
Tel: +66 2 012 7500
Mobile: +66 92 087 9222
Email: hidenao.tanaka@ametek.com

Solartron Metrology also carries an extensive network of sales agents in all major countries. For a local contact, go to www.solartronmetrology.com/contact or email at sales.solartronmetrology@ametek.com